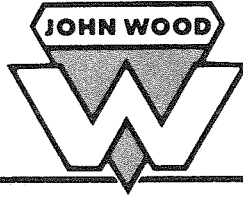


Wood Industrial Products Co.

Conshohocken, Pa. 19428 • Phone 215-828-0800

an ALCO STANDARD Company

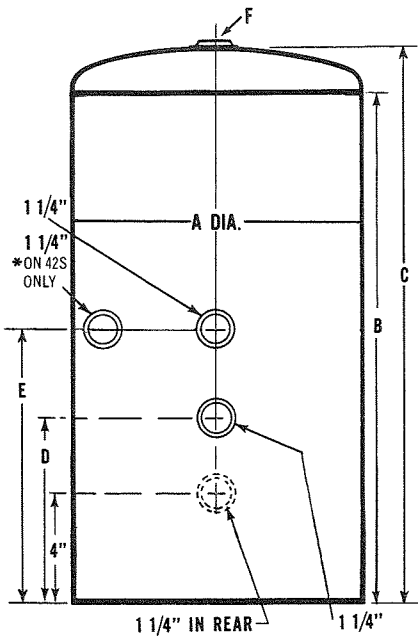
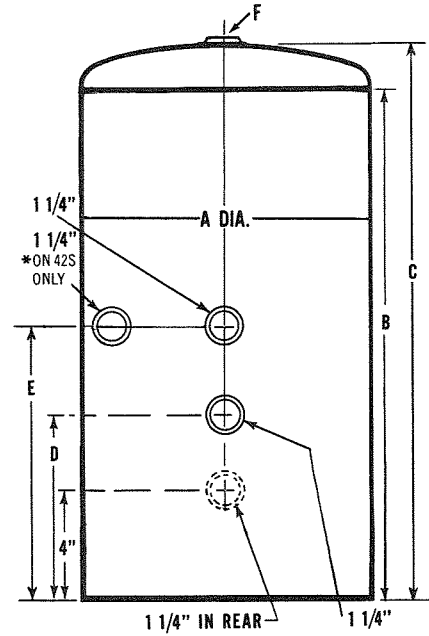


COMMERCIAL HYDRO-PNEUMATIC

Vertical Galvanized
and Glass Lined Tanks

GALVANIZED VERTICAL TANKS

Capacity (Actual Gallons)	A Diameter (Inside)	B Length (Shell)	C Length (Overall)	Opening Size	D Location of Openings	E Location of Openings	F Head Openings (on Galvanized Only)	Weight Lbs. 75 lbs. WP	Weight Lbs. 150 lbs. WP
12	12	23 $\frac{3}{4}$	25 $\frac{1}{2}$	1 $\frac{1}{4}$	6	14	1 $\frac{1}{4}$	30	—
18	12	35 $\frac{3}{4}$	37 $\frac{1}{2}$	1 $\frac{1}{4}$	12	20	1 $\frac{1}{4}$	40	—
20	16	23	26 $\frac{1}{4}$	1 $\frac{1}{4}$	12	14	1 $\frac{1}{2}$	55	—
30	16	35	38 $\frac{1}{4}$	1 $\frac{1}{4}$	12	20	1 $\frac{1}{2}$	56	—
42T	16	47	50 $\frac{1}{4}$	1 $\frac{1}{4}$	12	26	1 $\frac{1}{2}$	67	88
* 42S	20	30 $\frac{3}{4}$	35	1 $\frac{1}{4}$	12	18	2	75	110
82	20	58 $\frac{3}{4}$	63	1 $\frac{1}{4}$	12	32	2	115	168
120	24	58 $\frac{3}{4}$	63 $\frac{3}{8}$	1 $\frac{1}{4}$	12	32	2	195	260



GLASS LINED VERTICAL TANKS

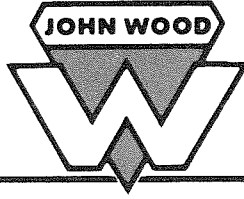
Capacity (Actual Gallons)	A Diameter (Inside)	B Length (Shell)	C Length (Overall)	Opening Size	D Location of Openings	E Location of Openings	F Head Openings (on Galvanized Only)	Weight Lbs. 75 lbs. WP
42	16	47	50 $\frac{1}{4}$	1 $\frac{1}{4}$	12	26	1 $\frac{1}{2}$	67
42	20	30 $\frac{3}{4}$	35	1 $\frac{1}{4}$	12	18	2	75
82	20	58 $\frac{3}{4}$	63	1 $\frac{1}{4}$	12	32	2	115
120	24	58 $\frac{3}{4}$	63 $\frac{3}{8}$	1 $\frac{1}{4}$	12	32	2	195

STA-CHARGE AIR SEPARATION FLOAT

Available in galvanized and glass lined tanks in all sizes.

Wood Industrial Products Co.

Conshohocken, Pa. 19428 • Phone 215-828-0800
an ALCO STANDARD Company

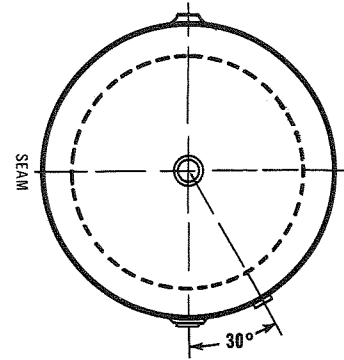


COMMERCIAL HYDRO-PNEUMATIC

Standard Vertical Galvanized Tanks
Standard Horizontal Galvanized Tanks

STANDARD NON-CODE VERTICAL TANKS

	A	B	C	D	E	F	
Capacity (Actual Gallons)	Diameter (Inside)	Length (Shell)	Length (Overall)			Base Ring (Diameter)	Weight Lbs. (75 lbs. WP)
215	30	63 ³ / ₈	73 ³ / ₈	29 ³ / ₄	11 ¹ / ₄	24	290
310	36	62 ³ / ₈	74 ³ / ₈	29 ³ / ₁₆	11 ¹ / ₄	30	390
530	36	112 ¹ / ₂	124 ¹ / ₂	54 ¹ / ₄	19 ¹ / ₄	30	535



STANDARD NON-CODE HORIZONTAL TANKS

	A	B	C	D	E	F	G	H	J	
Capacity (Actual Gallons)	Diameter (Inside)	Length (Shell)	Length (Overall)	Galvanized Only	Location of Opening	Location of Opening			(Inlet and Outlet)	Weight Lbs. (75 lbs. WP)
85	20	59	66	2	6	7	5	10	1 ¹ / ₄	115
125	24	58 ³ / ₄	66 ³ / ₄	2	8	9	7	14	1 ¹ / ₄	195
215	30	63 ³ / ₈	73 ³ / ₈	3	11	12	7 ³ / ₄	15 ¹ / ₂	2	290
310	36	62 ³ / ₈	74 ³ / ₈	3	14	15 ¹ / ₂	7 ³ / ₄	15 ¹ / ₂	2	390
530	36	112 ¹ / ₂	124 ¹ / ₂	3	14	15 ¹ / ₂	7 ³ / ₄	15 ¹ / ₂	2	535

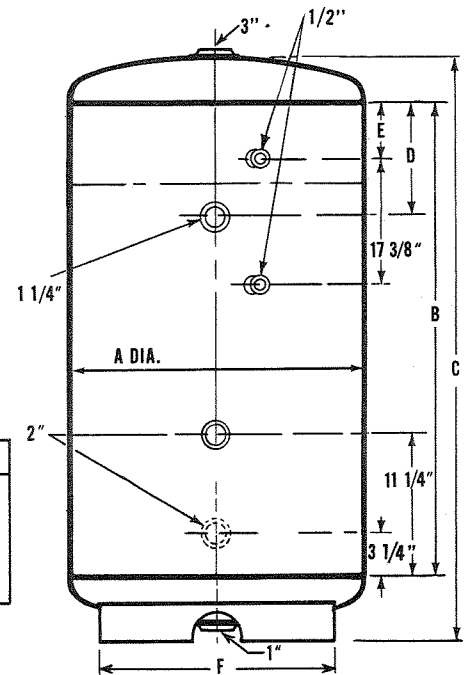


Figure 1

All Tanks are also available in Red Oxide.

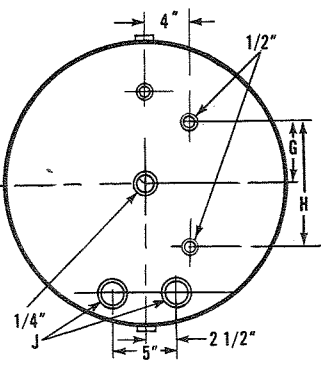


Figure 2

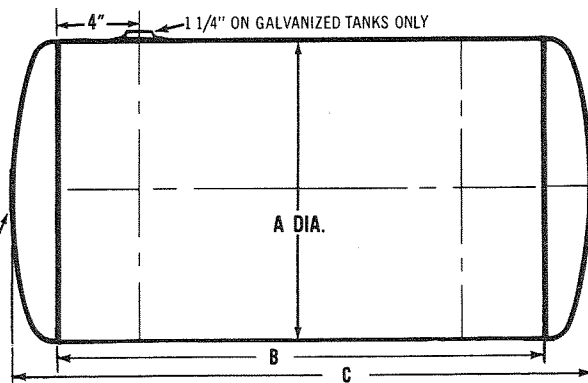


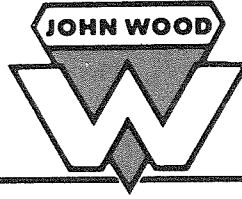
Figure 1

All fittings on this end of tank are as shown in figure 2.

ALL SPECIFICATIONS FOR ALL TANKS SUBJECT TO CHANGE WITHOUT FORMAL NOTICE

Wood Industrial Products Co.

Conshohocken, Pa. 19428 · Phone 215-828-0800
an ALCO STANDARD Company



COMMERCIAL HYDRO-PNEUMATIC

Standard Galvanized Horizontal Tanks

Capacity (Actual Gallons)	A Diameter (See Note below)	B Length (Shell)	C Length (Overall)	D	E	F	G Location of Openings	H	J	K (Inlet and Outlet)	Thickness (Head)	Thickness (Shell)	Weight 100 lbs. WP Painted	Weight 100 lbs. WP Galvanized
265	42	36	50	17	17 3/4	8 3/4	17 1/2	3 3/8	6 1/4	2	3 1/8	.146	460	500
490	42	72	86	17	17 3/4	8 3/4	17 1/2	3 3/8	6 1/4	2	3 1/8	.146	700	750
700	42	108	122	17	17 3/4	8 3/4	17 1/2	3 3/8	6 1/4	2	3 1/8	.146	940	1,000
930	42	144	158	17	17 3/4	8 3/4	17 1/2	3 3/8	6 1/4	2	3 1/8	.146	1,180	1,260
500	48	54	69 3/4	20	20 3/4	9 3/4	19 1/2	3 3/8	6 1/4	2 1/2	.250	3/16	825	895
1,000	48	108	123 3/4	20	20 3/4	9 3/4	19 1/2	3 3/8	6 1/4	2 1/2	.250	3/16	1,300	1,380
1,500	48	177	192 3/4	20	20 3/4	9 3/4	19 1/2	3 3/8	6 1/4	2 1/2	.250	3/16	1,780	1,875
2,000	48	246	269 3/4	20	20 3/4	9 3/4	19 1/2	3 3/8	6 1/4	2 1/2	.250	3/16	2,260	2,380
1,000	54	96	119 1/2	23	23	9 3/4	19 1/2	3 1/2	7	3	.250	3/16	1,300	1,385
1,500	54	144	167 1/2	23	23	9 3/4	19 1/2	3 1/2	7	3	.250	3/16	1,730	1,835
2,000	54	192	215 1/2	23	23	9 3/4	19 1/2	3 1/2	7	3	.250	3/16	2,160	2,290
2,500	54	240	263 1/2	23	23	9 3/4	19 1/2	3 1/2	7	3	.250	3/16	2,600	2,755
1,500	60	108	133 3/8	26	26	10 3/4	21 1/2	4	8	4	3/4	3/16	1,660	1,795
2,200	60	162	187 3/8	26	26	10 3/4	21 1/2	4	8	4	3/4	3/16	2,215	2,355
2,800	60	216	241 3/8	26	26	10 3/4	21 1/2	4	8	4	3/4	3/16	2,760	2,925
4,000	60	324	349 3/8	26	26	10 3/4	21 1/2	4	8	4	3/4	3/16	3,810	4,050
2,200	72	108	137 1/2	32	32	11 3/4	23 1/2	4	8	4	.250	3/16	2,310	—
4,000	72	216	245 1/2	32	32	11 3/4	23 1/2	4	8	4	.250	3/16	3,590	—
5,000	72	270	299 1/2	32	32	11 3/4	23 1/2	4	8	4	.250	3/16	4,234	—
6,000	72	324	353 1/2	32	32	11 3/4	23 1/2	4	8	4	.250	3/16	4,870	—
2,700	84	96	129 3/4	38	38	12 3/4	25 1/2	4	8	4	.3125	.218	3,670	—
5,000	84	192	225 3/4	38	38	12 3/4	25 1/2	4	8	4	.3125	.218	5,530	—
7,500	84	288	321 3/4	38	38	12 3/4	25 1/2	4	8	4	.3125	.218	7,400	—
3,750	96	96	133 3/4	44	44	12 3/4	25 1/2	5	10	4	.343	.250	4,870	—
6,750	96	192	229 3/4	44	44	12 3/4	25 1/2	5	10	4	.343	.250	7,200	—
10,000	96	288	325 3/4	44	44	12 3/4	25 1/2	5	10	4	.343	.250	9,540	—

Vessels up to and including 48" diameter are I.D.; all others O.D.

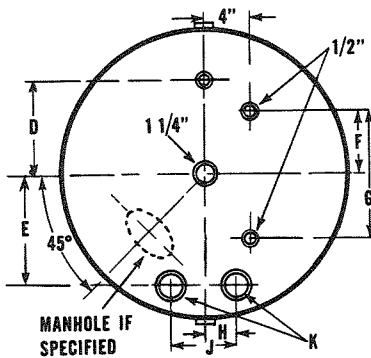


Figure 2

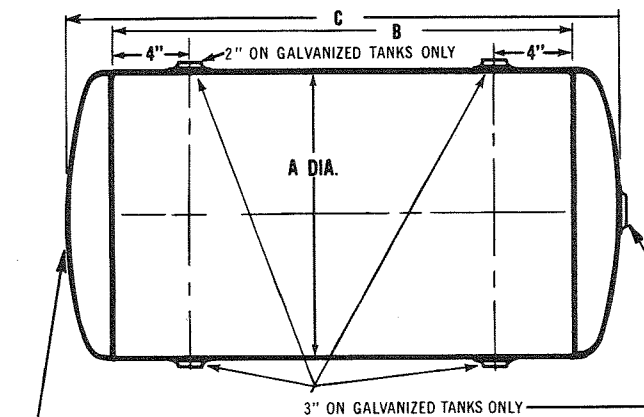


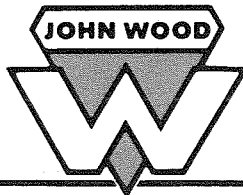
Figure 1

All fittings on this end of tank are as shown in figure 2.

Wood Industrial Products Co.

Conshohocken, Pa. 19428 · Phone 215-828-0800

an ALCO STANDARD Company



COMMERCIAL HYDRO-PNEUMATIC

Standard Painted Horizontal Tanks

Capacity (Actual Gallons)	A Diameter (See Note below)	B Length (Shell)	C Length (Overall)	D	E	F	G Location of Openings	H	J	K (Inlet and Outlet)	Thickness (Head)	Thickness (Shell)	Weight 100 lbs. WP Painted	Weight 100 lbs. WP Galvanized
265	42	36	50	17	17 $\frac{3}{4}$	8 $\frac{3}{4}$	17 $\frac{1}{2}$	3 $\frac{3}{8}$	6 $\frac{1}{4}$	2	3 $\frac{1}{8}$.146	460	500
490	42	72	86	17	17 $\frac{3}{4}$	8 $\frac{3}{4}$	17 $\frac{1}{2}$	3 $\frac{3}{8}$	6 $\frac{1}{4}$	2	3 $\frac{1}{8}$.146	700	750
700	42	108	122	17	17 $\frac{3}{4}$	8 $\frac{3}{4}$	17 $\frac{1}{2}$	3 $\frac{3}{8}$	6 $\frac{1}{4}$	2	3 $\frac{1}{8}$.146	940	1,000
930	42	144	158	17	17 $\frac{3}{4}$	8 $\frac{3}{4}$	17 $\frac{1}{2}$	3 $\frac{3}{8}$	6 $\frac{1}{4}$	2	3 $\frac{1}{8}$.146	1,180	1,260
500	48	54	69 $\frac{3}{4}$	20	20 $\frac{3}{4}$	9 $\frac{3}{4}$	19 $\frac{1}{2}$	3 $\frac{3}{8}$	6 $\frac{1}{4}$	2 $\frac{1}{2}$.250	$\frac{3}{16}$	825	895
1,000	48	108	123 $\frac{3}{4}$	20	20 $\frac{3}{4}$	9 $\frac{3}{4}$	19 $\frac{1}{2}$	3 $\frac{3}{8}$	6 $\frac{1}{4}$	2 $\frac{1}{2}$.250	$\frac{3}{16}$	1,300	1,380
1,500	48	177	192 $\frac{3}{4}$	20	20 $\frac{3}{4}$	9 $\frac{3}{4}$	19 $\frac{1}{2}$	3 $\frac{3}{8}$	6 $\frac{1}{4}$	2 $\frac{1}{2}$.250	$\frac{3}{16}$	1,780	1,875
2,000	48	246	269 $\frac{3}{4}$	20	20 $\frac{3}{4}$	9 $\frac{3}{4}$	19 $\frac{1}{2}$	3 $\frac{3}{8}$	6 $\frac{1}{4}$	2 $\frac{1}{2}$.250	$\frac{3}{16}$	2,260	2,380
1,000	54	96	119 $\frac{1}{2}$	23	23	9 $\frac{3}{4}$	19 $\frac{1}{2}$	3 $\frac{1}{2}$	7	3	.250	$\frac{3}{16}$	1,300	1,385
1,500	54	144	167 $\frac{1}{2}$	23	23	9 $\frac{3}{4}$	19 $\frac{1}{2}$	3 $\frac{1}{2}$	7	3	.250	$\frac{3}{16}$	1,730	1,835
2,000	54	192	215 $\frac{1}{2}$	23	23	9 $\frac{3}{4}$	19 $\frac{1}{2}$	3 $\frac{1}{2}$	7	3	.250	$\frac{3}{16}$	2,160	2,290
2,500	54	240	263 $\frac{1}{2}$	23	23	9 $\frac{3}{4}$	19 $\frac{1}{2}$	3 $\frac{1}{2}$	7	3	.250	$\frac{3}{16}$	2,600	2,755
1,500	60	108	133 $\frac{3}{8}$	26	26	10 $\frac{3}{4}$	21 $\frac{1}{2}$	4	8	4	$\frac{1}{4}$	$\frac{3}{16}$	1,660	1,795
2,200	60	162	187 $\frac{3}{8}$	26	26	10 $\frac{3}{4}$	21 $\frac{1}{2}$	4	8	4	$\frac{1}{4}$	$\frac{3}{16}$	2,215	2,355
2,800	60	216	241 $\frac{3}{8}$	26	26	10 $\frac{3}{4}$	21 $\frac{1}{2}$	4	8	4	$\frac{1}{4}$	$\frac{3}{16}$	2,760	2,925
4,000	60	324	349 $\frac{3}{8}$	26	26	10 $\frac{3}{4}$	21 $\frac{1}{2}$	4	8	4	$\frac{1}{4}$	$\frac{3}{16}$	3,810	4,050
2,200	72	108	137 $\frac{1}{2}$	32	32	11 $\frac{3}{4}$	23 $\frac{1}{2}$	4	8	4	.250	$\frac{3}{16}$	2,310	—
4,000	72	216	245 $\frac{1}{2}$	32	32	11 $\frac{3}{4}$	23 $\frac{1}{2}$	4	8	4	.250	$\frac{3}{16}$	3,590	—
5,000	72	270	299 $\frac{1}{2}$	32	32	11 $\frac{3}{4}$	23 $\frac{1}{2}$	4	8	4	.250	$\frac{3}{16}$	4,234	—
6,000	72	324	353 $\frac{1}{2}$	32	32	11 $\frac{3}{4}$	23 $\frac{1}{2}$	4	8	4	.250	$\frac{3}{16}$	4,870	—
2,700	84	96	129 $\frac{3}{4}$	38	38	12 $\frac{3}{4}$	25 $\frac{1}{2}$	4	8	4	.3125	.218	3,670	—
5,000	84	192	225 $\frac{3}{4}$	38	38	12 $\frac{3}{4}$	25 $\frac{1}{2}$	4	8	4	.3125	.218	5,530	—
7,500	84	288	321 $\frac{3}{4}$	38	38	12 $\frac{3}{4}$	25 $\frac{1}{2}$	4	8	4	.3125	.218	7,400	—
3,750	96	96	133 $\frac{3}{4}$	44	44	12 $\frac{3}{4}$	25 $\frac{1}{2}$	5	10	4	.343	.250	4,870	—
6,750	96	192	229 $\frac{3}{4}$	44	44	12 $\frac{3}{4}$	25 $\frac{1}{2}$	5	10	4	.343	.250	7,200	—
10,000	96	288	325 $\frac{3}{4}$	44	44	12 $\frac{3}{4}$	25 $\frac{1}{2}$	5	10	4	.343	.250	9,540	—

Vessels up to and including 48" diameter are I.D.; all others O.D.

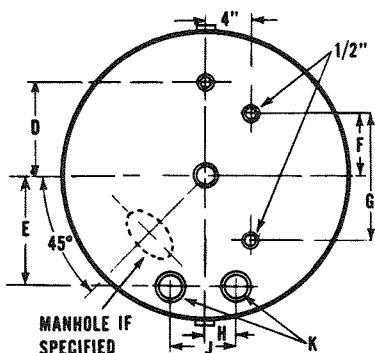


Figure 2

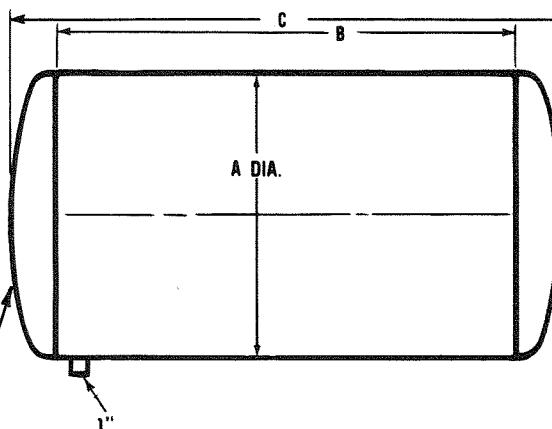
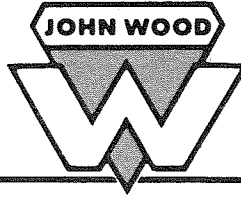


Figure 1

All fittings on this end of tank are as shown in figure 2.

Wood Industrial Products Co.

Conshohocken, Pa. 19428 · Phone 215-828-0800
an ALCO STANDARD Company



ASME HYDRO-PNEUMATIC

Standard Galvanized Vertical Tanks

	A	B	C	D	E	F	G	H	J				
Capacity (Actual Gallons)	Diameter (Inside)	Length (Shell)	Length (Overall)	Inspection Opening	Leg Clearance			Opening (Inlet and Outlet)	Opening (Drain)	Thickness (Head)	Thickness (Shell)	Weight 125 lbs. WP	Vacuum 300° F. PSI
30	14	39¼	48	1½	2⅝	13%	17⅝	1	1	.094	.097	73	23.0
40	14	54¼	63	1½	2⅝	15%	25⅝	1	1	.094	.097	93	16.0
60	16	61¼	72	1½	2¾	15%	28¾	1¼	1¼	.107	.094	127	13.1
80	20	50½	62½	2	2¾	15%	23½	1½	1½	.107	.096	145	12.0
100	20	66	78	2	2¾	15%	32	1½	1½	.107	.096	181	13.2
120	24	50¾	65	2	2¾	17%	23¾	1½	1½	.107	.115	218	13.7
135	24	57¾	72	2	2¾	17%	26¾	1½	1½	.107	.115	235	19.0
180	30	43¼	62¼	2	1⅞	17%	19⅝	2	1½	.172	.145	318	18.0
220	30	58	77	2	1⅞	17%	27½	2	1½	.172	.145	391	13.5
240	30	65	81½	2	1⅞	17%	30½	2	1½	.172	.146	415	12.6
310	30	86¾	105¾	2	1⅞	17%	41¾	2	1½	.172	.145	517	8.9
300	36	49¾	71¼	2	1⅞	17%	22⅞	2	1½	.161	.171	531	18.0
400	36	72	93½	2	1⅞	17%	35¼	2	1½	.161	.171	675	12.6
515	36	99¼	120¾	2	1⅞	17%	47⅝	2	1½	.161	.171	845	9.0

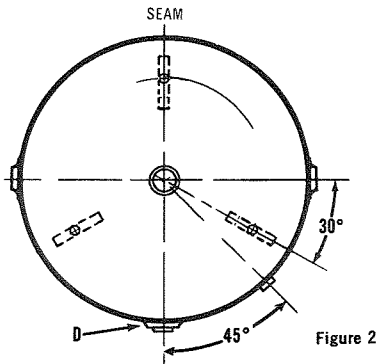


Figure 2

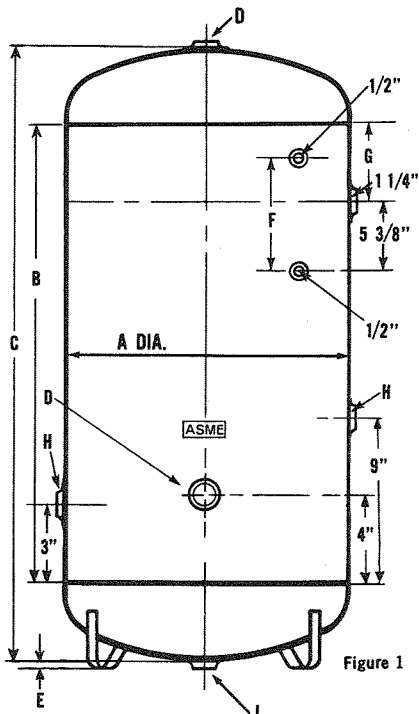


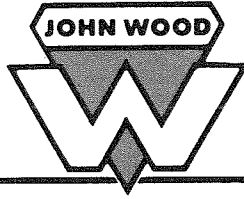
Figure 1

All tanks in this series are galvanized. Tanks 14" to 24" diameter are I.D.; Tanks 30" to 36" diameter are O.D. Tanks provided with 3 legs for vertical installation. All seams are submerged arc-welded. Design pressure is 125 P.S.I.G. Design temperature is -20° to +650° F. Test pressure 188 P.S.I.G.

ALL SPECIFICATIONS FOR ALL TANKS SUBJECT TO CHANGE WITHOUT FORMAL NOTICE

Wood Industrial Products Co.

Conshohocken, Pa. 19428 • Phone 215-828-0800
an ALCO STANDARD Company



ASME HYDRO-PNEUMATIC

Painted and Galvanized
Standard Tanks

Capacity (Actual Gallons)	A Diameter (Inside)	B Length (Shell)	C Length (Overall)	D	E	F	G (Inlet & Outlet)	Thickness (Heads)	Thickness (Shell)	Weight 125 lbs. WP Painted	Weight 125 lbs. WP Galvanized	Vacuum 300° F. PSI
80	20	50 1/2	62 1/2	8	5	10	1 1/4	.114	.096	130	145	17.0
100	20	66	78	8	5	10	1 1/4	.114	.096	162	181	13.2
120	24	50 1/2	65	9	6	12	1 1/2	.137	.115	195	218	13.7
135	24	57 3/4	72	9	6	12	1 1/2	.137	.115	215	235	12.2
180	30	43 1/4	62 1/4	12	7 11/16	15 3/8	2	.172	.145	295	318	27.0
220	30	58	77	12	7 11/16	15 3/8	2	.172	.145	355	391	20.0
240	30	62 1/2	81 1/2	12	7 11/16	15 3/8	2	.172	.146	385	415	18.0
310	30	86 3/4	105 3/4	12	7 11/16	15 3/8	2	.172	.145	480	517	14.0
300	36	49 3/4	71 1/4	14	8 11/16	17 3/8	2	.161	.171	485	531	28.0
400	36	72	93 1/2	14	8 11/16	17 3/8	2	.161	.171	634	675	19.0
515	36	99 1/4	120 3/4	14	8 11/16	17 3/8	2	.161	.171	789	845	14.2

Manholes available upon requests. Note weight differential.

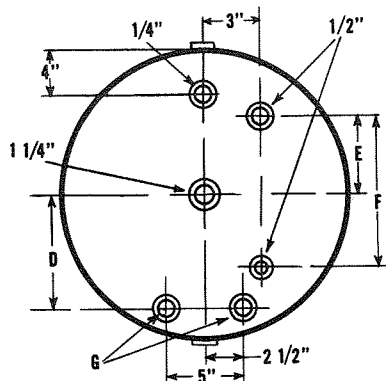


Figure 2

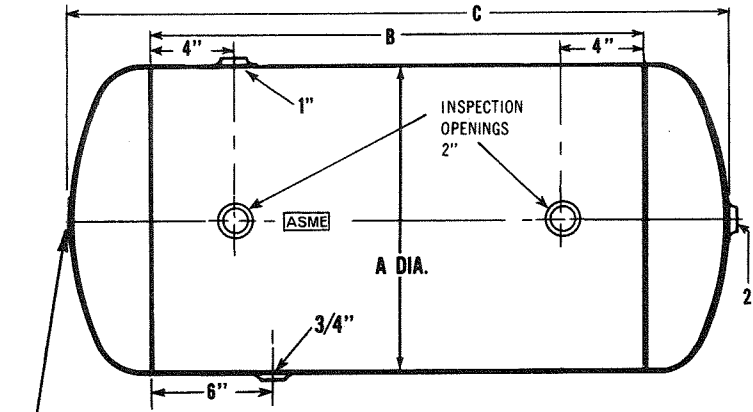
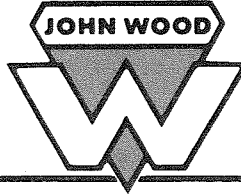


Figure 1

All fittings on this end of tank are as shown in figure 2.

Wood Industrial Products Co.

Conshohocken, Pa. 19428 · Phone 215-828-0800
an ALCO STANDARD Company



ASME HYDRO-PNEUMATIC

Standard Galvanized
Horizontal Tanks

Capacity (Actual Gallons)	A Diameter (Outside)	B Length (Shell)	C Length (Overall)	E	F	G	H	J	K	THICKNESS			WEIGHTS			VACUUM 300° F. PSI	
										Heads (All WP's)	Shells 125 lbs. WP	Shells 150 lbs. WP	125 lbs. WP Painted	150 lbs. WP Painted	Extra Galvanized 125 or 150 WP	125 lbs. WP	150 lbs. WP
280	42	39	59 7/8	8 3/4	17 1/2	3	6	17	2	.296	.200	.237	535	590	30	30.0	45.0
525	42	78	98 7/8	8 3/4	17 1/2	3	6	17	2	.296	.200	.237	834	944	50	14.7	22.0
750	42	117	137 7/8	8 3/4	17 1/2	3	6	17	2	.296	.200	.237	1,133	1,298	65	9.5	14.1
1,000	42	156	176 7/8	8 3/4	17 1/2	3	6	17	2	.296	.200	.237	1,432	1,652	90	7.1	10.7
500	48	54	77 1/2	9 3/4	19 1/2	3 1/8	6 1/4	20 3/4	2 1/2	.265	.228	.263	1,134	1,232	45	24.0	32.0
1,000	48	108	131 1/2	9 3/4	19 1/2	3 1/8	6 1/4	20 3/4	2 1/2	.265	.228	.263	1,729	1,926	85	12.3	16.0
1,500	48	177	200 1/2	9 3/4	19 1/2	3 1/8	6 1/4	20 3/4	2 1/2	.265	.228	.263	2,319	2,620	100	7.1	9.2
2,000	48	246	269 1/2	9 3/4	19 1/2	3 1/8	6 1/4	20 3/4	2 1/2	.265	.228	.263	2,914	3,314	140	4.9	6.5
1,000	54	96	119 1/2	9 3/4	19 1/2	3 1/2	7	23	3	.354	.257	.257	2,047	2,047	85	15.0	
1,500	54	144	167 1/2	9 3/4	19 1/2	3 1/2	7	23	3	.354	.257	.257	2,646	2,646	115	10.0	
2,000	54	192	215 1/2	9 3/4	19 1/2	3 1/2	7	23	3	.354	.257	.257	3,245	3,245	135	7.2	
2,500	54	240	263 1/2	9 3/4	19 1/2	3 1/2	7	23	3	.354	.257	.257	3,850	3,850	190	6.0	
1,500	60	108	134	10 3/4	21 1/2	4	8	25	4	.392	.285	.282	2,888	2,888	125	15.0	
2,200	60	162	188	10 3/4	21 1/2	4	8	25	4	.392	.285	.282	3,783	3,783	200	9.9	
2,800	60	216	242	10 3/4	21 1/2	4	8	25	4	.392	.285	.282	4,678	4,678	250	7.1	
4,000	60	324	350	10 3/4	21 1/2	4	8	25	4	.392	.285	.282	6,468	6,468	—	4.7	
2,200	72	108	137 3/4	11 3/4	23 1/2	4	8	28	4	.390	100 lb. WP .274	100 lb. WP .320	3,850	—	—	10.2	
4,000	72	216	245 3/4	11 3/4	23 1/2	4	8	28	4	.390	.274	.320	6,230	—	—	4.9	
5,000	72	270	299 3/4	11 3/4	23 1/2	4	8	28	4	.390	.274	.320	7,436	—	—	3.9	
6,000	72	324	353 3/4	11 3/4	23 1/2	4	8	28	4	.390	.274	.320	8,622	—	—	3.3	
2,750	84	96	129 3/4	12 3/4	25 1/2	4	8	34	4	.460	.320	.365	4,794	—	—	14.2	
5,000	84	192	225 3/4	12 3/4	25 1/2	4	8	34	4	.460	.320	.365	7,061	—	—	7.2	
7,500	84	288	321 3/4	12 3/4	25 1/2	4	8	34	4	.460	.320	.365	9,724	—	—	4.5	
3,750	96	96	133 3/4	13 3/4	27 1/2	4	8	40	4	.554	.365	.410	6,898	—	—	16.0	
6,750	96	192	229 3/4	13 3/4	27 1/2	4	8	40	4	.554	.365	.410	10,282	—	—	8.2	
10,000	96	288	325 3/4	13 3/4	27 1/2	4	8	40	4	.554	.365	.410	13,666	—	—	5.1	

All tanks are equipped with 11x15" manhole. 72" and larger are 100 lb. W.P. Higher W.P. available on request.

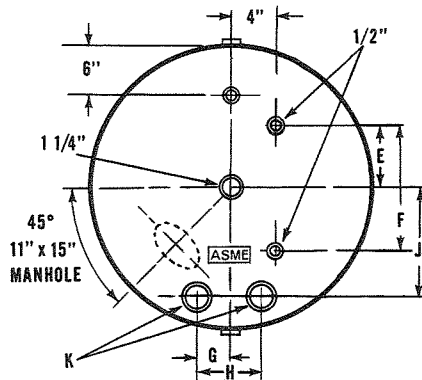


Figure 2

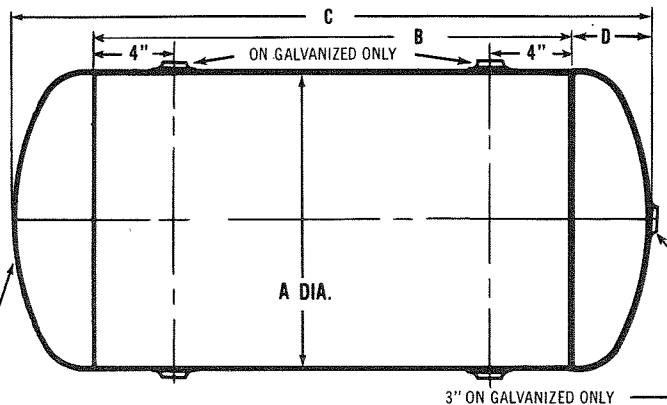
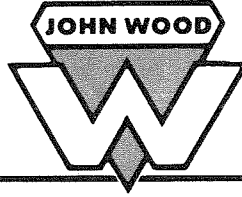


Figure 1

All fittings on this end of tank are as shown in figure 2.

Wood Industrial Products Co.

Conshohocken, Pa. 19428 · Phone 215-828-0800
an ALCO STANDARD Company



ASME HYDRO-PNEUMATIC

Standard Painted Horizontal Tanks

Capacity (Actual Gallons)	A Diameter (Outside)	B Length (Shell)	C Length (Overall)	E	F	G	H	J	K	THICKNESS			WEIGHTS			VACUUM 300° F. PSI	
										Heads (All WP's)	Shells 125 lbs. WP	Shells 150 lbs. WP	125 lbs. WP Painted	150 lbs. WP Painted	Extra Galvanized 125 or 150 WP	125 lbs. WP	150 lbs. WP
280	42	39	59 7/8	8 3/4	17 1/2	3	6	17	2	.296	.200	.237	535	590	30	30.0	45.0
525	42	78	98 7/8	8 3/4	17 1/2	3	6	17	2	.296	.200	.237	834	944	50	14.7	22.0
750	42	117	137 7/8	8 3/4	17 1/2	3	6	17	2	.296	.200	.237	1,133	1,298	65	9.5	14.1
1,000	42	156	176 7/8	8 3/4	17 1/2	3	6	17	2	.296	.200	.237	1,432	1,652	90	7.1	10.7
500	48	54	77 1/2	9 3/4	19 1/2	3 1/8	6 1/4	20 3/4	2 1/2	.265	.228	.263	1,134	1,232	45	24.0	32.0
1,000	48	108	131 1/2	9 3/4	19 1/2	3 1/8	6 1/4	20 3/4	2 1/2	.265	.228	.263	1,729	1,926	85	12.3	16.0
1,500	48	177	200 1/2	9 3/4	19 1/2	3 1/8	6 1/4	20 3/4	2 1/2	.265	.228	.263	2,319	2,620	100	7.1	9.2
2,000	48	246	269 1/2	9 3/4	19 1/2	3 1/8	6 1/4	20 3/4	2 1/2	.265	.228	.263	2,914	3,314	140	4.9	6.5
1,000	54	96	119 1/2	9 3/4	19 1/2	3 1/2	7	23	3	.354	.257	.257	2,047	2,047	85	—	15.0
1,500	54	144	167 1/2	9 3/4	19 1/2	3 1/2	7	23	3	.354	.257	.257	2,646	2,646	115	—	10.0
2,000	54	192	215 1/2	9 3/4	19 1/2	3 1/2	7	23	3	.354	.257	.257	3,245	3,245	135	—	7.2
2,500	54	240	263 1/2	9 3/4	19 1/2	3 1/2	7	23	3	.354	.257	.257	3,850	3,850	190	—	6.0
1,500	60	108	134	10 3/4	21 1/2	4	8	25	4	.392	.285	.282	2,888	2,888	125	—	15.0
2,200	60	162	188	10 3/4	21 1/2	4	8	25	4	.392	.285	.282	3,783	3,783	200	—	9.9
2,800	60	216	242	10 3/4	21 1/2	4	8	25	4	.392	.285	.282	4,678	4,678	250	—	7.1
4,000	60	324	350	10 3/4	21 1/2	4	8	25	4	.392	.285	.282	6,468	6,468	—	—	4.7
2,200	72	108	137 3/4	11 3/4	23 1/2	4	8	28	4	.390	.274	—	3,850	—	—	—	10.2
4,000	72	216	245 3/4	11 3/4	23 1/2	4	8	28	4	.390	.274	—	6,230	—	—	—	4.9
5,000	72	270	299 3/4	11 3/4	23 1/2	4	8	28	4	.390	.274	—	7,436	—	—	—	3.9
6,000	72	324	353 3/4	11 3/4	23 1/2	4	8	28	4	.390	.274	—	8,622	—	—	—	3.3
2,750	84	96	129 3/4	12 3/4	25 1/2	4	8	34	4	.460	.320	—	4,794	—	—	—	14.2
5,000	84	192	225 3/4	12 3/4	25 1/2	4	8	34	4	.460	.320	—	7,061	—	—	—	7.2
7,500	84	288	321 3/4	12 3/4	25 1/2	4	8	34	4	.460	.320	—	9,724	—	—	—	4.5
3,750	96	96	133 3/4	13 3/4	27 1/2	4	8	40	4	.554	.365	—	6,898	—	—	—	16.0
6,750	96	192	229 3/4	13 3/4	27 1/2	4	8	40	4	.554	.365	—	10,282	—	—	—	8.2
10,000	96	288	325 3/4	13 3/4	27 1/2	4	8	40	4	.554	.365	—	13,666	—	—	—	5.1

All tanks are equipped with 11x15" manhole. 72" and larger are 100 lb. W.P. Higher W.P. available on request.

These tanks are available in choice of Painted Prime Coat Red Oxide, Cement-lined, Bitumastic-lined, Phenolic-lined, or coating of your specification.

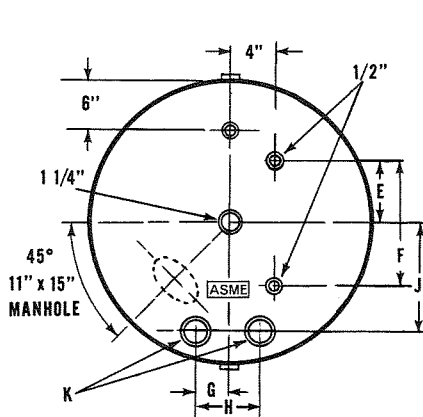


Figure 2

All fittings on this end of tank are as shown in figure 2.

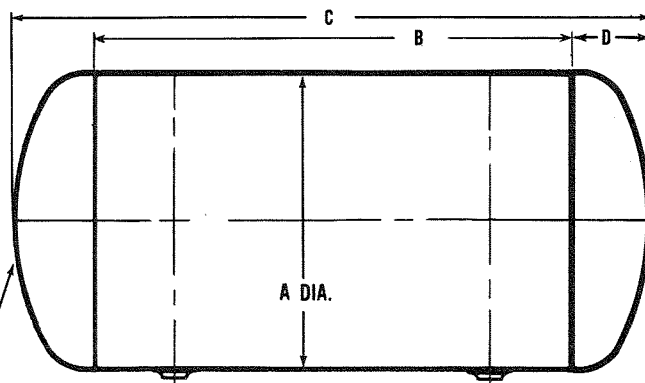


Figure 1