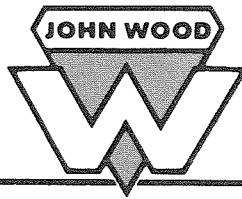


# Wood Industrial Products Co.

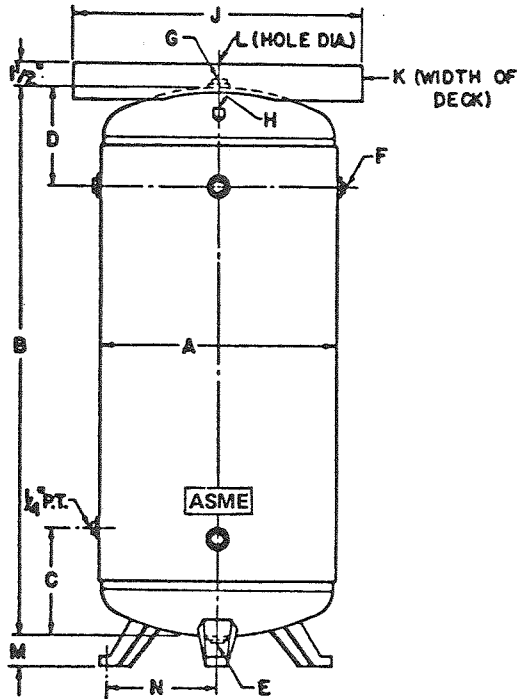
Conshohocken, Pa. 19428 • Phone 215-828-0800  
an ALCO STANDARD Company



## ASME AIR RECEIVERS

Vertical

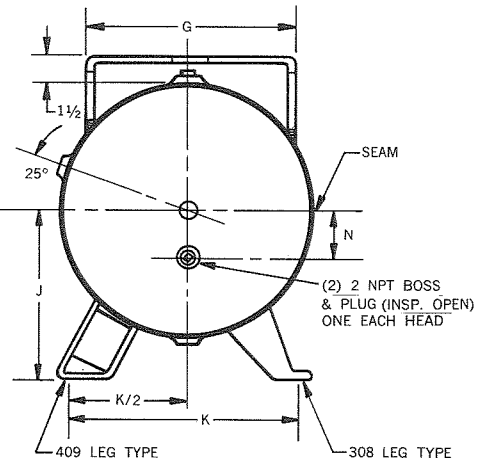
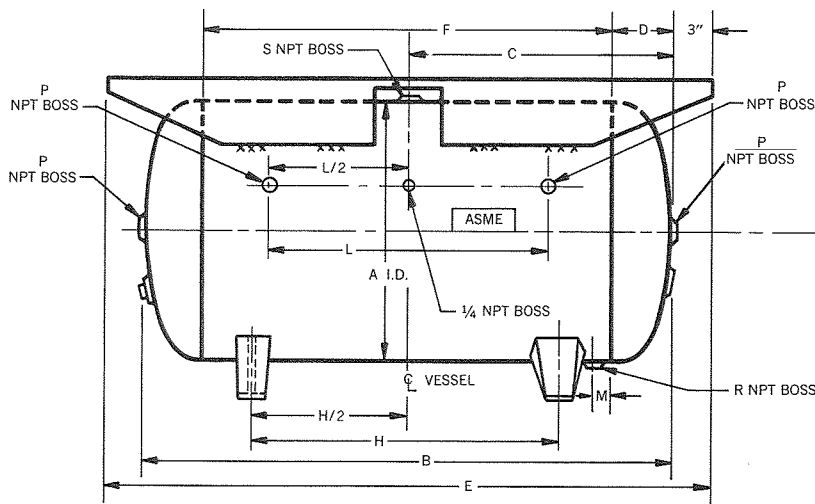
Constructed to ASME and National Board specifications under the supervision of a licensed inspector. Material specifications and thicknesses permit installation in all states.



DIMENSIONS AND SPECIFICATIONS	PART NUMBER			
	JVRR-32-210	JVRR-32-211	JVRR-32-212	JVRR-32-213
Gallons	30	60	80	120
A	16	20	24	30
B	38	48	46	44
C	10 1/4	11	13 1/8	11 1/2
D	9 1/4	10	12 1/8	11 1/2
E	3/8	3/8	1/2	3/8
F	1/2	3/4	1	1 1/4
G	3/4	1	1	1 1/2
H	1/4	1/4	1/4	1/4
J	22	30	30	34
K	9	13	13	14
L	3	3	3	3
M	2	1 15/16	1 1/2	1 13/16
N	9 1/2	12 1/8	13 3/8	14 13/16
Working Pressure	200#	200#	200#	200#
Shell Gauge	.124	.154	.185	.228
Head Gauge	.107	.134	.161	.201
Weight, lbs.	90	180	270	360

ALL SIZES NORMALLY IN STOCK FOR PROMPT SHIPMENT

## ASME AIR RECEIVERS Horizontal with Extended Deck



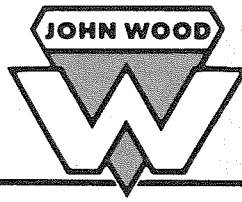
Design pressure 200 PSIG, Test pressure 300 PSIG; Design temperature -20° to 650° F. Type I, 2:1 elliptical heads. All seams submerged arc welded. Painted red oxide exterior.

Part No.	Gals	A	B	C	D	E	F	G	H	J	K	L	M	N	P	R	S	Leg Type	Lbs. WP	Shell Gauge	Head Gauge	Wt. in Lbs.
JXRR-32-223	60	20	48	24	6	54	36	16	30	12 3/8	19 1/2	28	2	7	3/4	3/8	1	308	200	.154	.134	218
JXRR-32-224	80	20	62 1/2	29	6	68 1/2	50 1/2	16	43 1/2	12 3/8	19 1/2	43 1/4	2	7	3/4	3/8	1	308	200	.154	.134	284
JXRR-32-225	120	24	67	31	7 1/8	73	52 3/4	18	33 1/2	13 15/16	22 1/4	44 3/4	2 1/4	8	1 1/4	3/4	1 1/2	409	200	.185	.161	415

ALL SPECIFICATIONS FOR ALL TANKS SUBJECT TO CHANGE WITHOUT FORMAL NOTICE

# Wood Industrial Products Co.

Conshohocken, Pa. 19428 • Phone 215-828-0800  
an ALCO STANDARD Company



## ASME AIR RECEIVERS

Horizontal

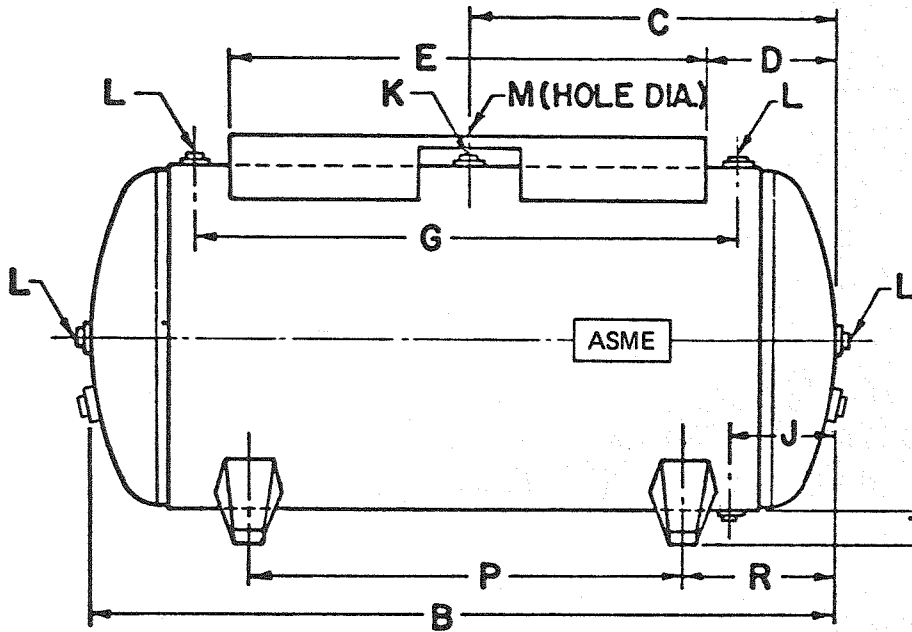


Figure 1

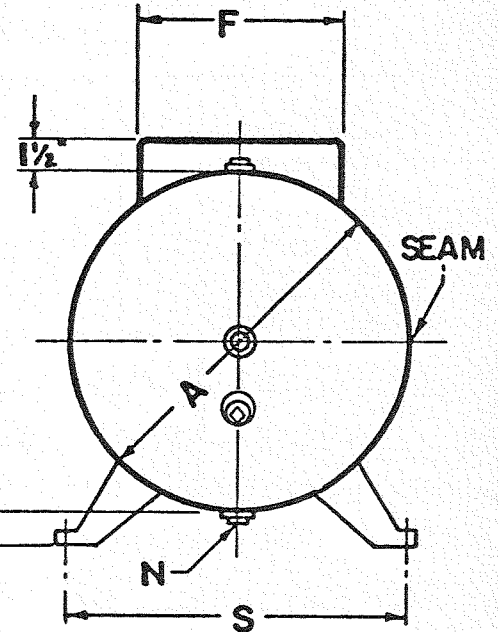


Figure 2

Dims. And Spec.	PART NUMBER														
	JHRR-32 001	JHRR-32 202	JHRR-32 003	JHRR-32 203	JHRR-32 303	JHRR-32 004	JHRR-32 204	JHRR-32 304	JHRR-32 005	JHRR-32 205	JHRR-32 305	JHRR-32 206	JHRR-32 007	JHRR-32 207	JHRR-32 307
	*	*		*			*			*		*		*	
Gallons	20	30	60	60	60	80	80	80	120	120	120	200	240	240	240
A	14	16	20	20	20	20	20	20	24	24	24	30	30	30	30
B	36	38	48	48	48	62-1/2	62-1/2	62-1/2	67	67	67	72	84	84	84
C	18	19	24	24	24	29	29	29	31	31	31	33-1/2	39-1/2	39-1/2	39-1/2
D	8	7-1/2	9	9	9	9	9	9	11	11	11	13-1/2	19-1/2	19-1/2	19-1/2
E	20	23	30	30	30	44	44	44	45	45	45	45	45	45	45
F	9	12	14	14	14	14	14	14	16	16	16	16	16	16	16
G	24-1/4	25-1/2	33-7/8	33-7/8	33-7/8	47-3/8	47-3/8	47-3/8	48-1/4	48-1/4	48-1/4	48-1/2	57	57	57
J	6-1/4	7-1/4	8	8	8	8	8	8	9-3/8	9-3/8	9-3/8	11-3/4	11-1/2	11-1/2	11-1/2
K	3/4	3/4	1	1	1	1	1	1	1-1/2	1-1/2	1-1/2	2	2	2	2
L	1/2	1/2	3/4	3/4	3/4	3/4	3/4	3/4	1-1/4	1-1/4	1-1/4	1-1/2	1-1/2	1-1/2	1-1/2
M	2-9/16	3	3	3	3	3	3	3	3	3	3	3	3	3	3
N	3/8	3/8	3/8	3/8	3/8	3/8	3/8	3/8	3/4	3/4	3/4	3/4	3/4	3/4	3/4
P	22	22	30	30	30	43-1/2	43-1/2	43-1/2	33-1/2	33-1/2	33-1/2	33-1/2	39	39	39
R	9	8	9	9	9	9-1/2	9-1/2	9-1/2	16-3/4	16-3/4	16-3/4	16-3/4	19-1/4	22-1/2	22-1/2
S	13-1/8	14-1/8	19-1/2	19-1/2	19-1/2	19-1/2	19-1/2	19-1/2	22-1/4	22-1/4	22-1/4	27-1/4	27-1/4	27-1/4	27-1/4
T	1-11/16	1-1/2	2-7/16	2-7/16	2-7/16	2-7/16	2-7/16	2-7/16	1-3/4	1-3/4	1-3/4	2	2	2	2
W.P.	165#	200#	125#	200#	275#	125#	200#	275#	125#	200#	275#	200#	125#	200#	275#
Shell Gauge	.097	.124	.096	.156	.213	.096	.156	.213	.115	.185	.250	.228	.143	.228	.312
Head Gauge	.094	.107	.114	.134	.185	.114	.134	.185	.137	.161	.221	.201	.171	.201	.276
Weight	71 lbs.	97 lbs.	140 lbs.	186 lbs.	245 lbs.	183 lbs.	243 lbs.	298 lbs.	319 lbs.	418 lbs.	542 lbs.	590 lbs.	495 lbs.	674 lbs.	914 lbs.

Construction to ASME and National Board specifications under the supervision of a licensed inspector. Material specifications and thicknesses permit installation in all states.

Painted red oxide primer.

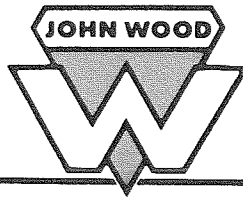
The 120, 200, and 240 gallon horizontal receivers are furnished with heavy duty fabricated legs.

\*Sizes normally in stock for prompt shipment.

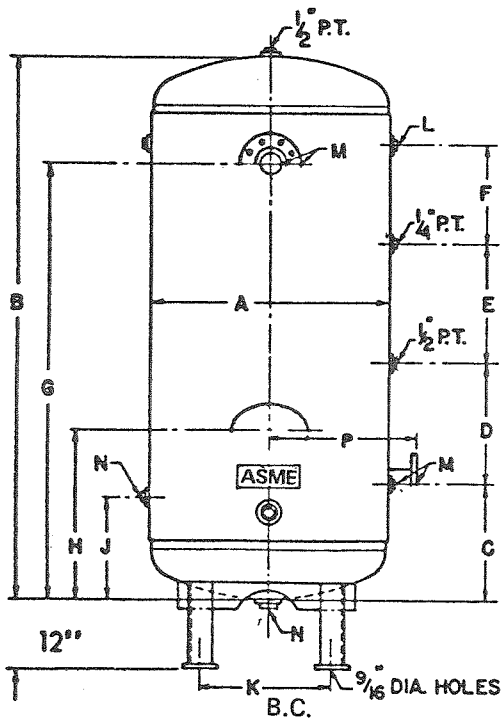
# Wood Industrial Products Co.

Conshohocken, Pa. 19428 • Phone 215-828-0800

an ALCO STANDARD Company



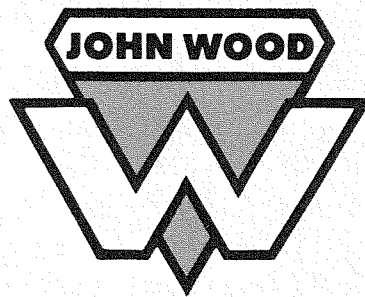
## INDUSTRIAL TYPE AIR RECEIVERS



Part Number	Gallons	Working Pressure	A	B	C	D	E	F	G	H	J	K	L	M	N	P	Shell Gauge	Head Gauge	Weight
JIRR-41 209	2200	2200	2200	2200	2200	2200	2200	2200	2200	2200	2200	2200	2200	2200	2200	2200	.094	.115	.185
JIRR-41 109	2200	2200	2200	2200	2200	2200	2200	2200	2200	2200	2200	2200	2200	2200	2200	2200	.094	.137	.161
JIRR-41 009	2200	2200	2200	2200	2200	2200	2200	2200	2200	2200	2200	2200	2200	2200	2200	2200	.162	.240	.320
JIRR-41 208	1540	1540	1540	1540	1540	1540	1540	1540	1540	1540	1540	1540	1540	1540	1540	1540	.094	.137	.161
JIRR-41 108	1540	1540	1540	1540	1540	1540	1540	1540	1540	1540	1540	1540	1540	1540	1540	1540	.162	.240	.320
JIRR-41 008	1540	1540	1540	1540	1540	1540	1540	1540	1540	1540	1540	1540	1540	1540	1540	1540	.162	.240	.320
JIRR-41 207	1080	1080	1080	1080	1080	1080	1080	1080	1080	1080	1080	1080	1080	1080	1080	1080	.094	.137	.161
JIRR-41 107	1080	1080	1080	1080	1080	1080	1080	1080	1080	1080	1080	1080	1080	1080	1080	1080	.162	.240	.320
* JIRR-41 007	1080	1080	1080	1080	1080	1080	1080	1080	1080	1080	1080	1080	1080	1080	1080	1080	.162	.240	.320
JIRR-41 206	700	700	700	700	700	700	700	700	700	700	700	700	700	700	700	700	.094	.137	.161
JIRR-41 106	700	700	700	700	700	700	700	700	700	700	700	700	700	700	700	700	.162	.240	.320
* JIRR-41 006	700	700	700	700	700	700	700	700	700	700	700	700	700	700	700	700	.162	.240	.320
* JIRR-41 205	400	400	400	400	400	400	400	400	400	400	400	400	400	400	400	400	.094	.137	.161
JIRR-41 105	400	400	400	400	400	400	400	400	400	400	400	400	400	400	400	400	.162	.240	.320
* JIRR-41 005	400	400	400	400	400	400	400	400	400	400	400	400	400	400	400	400	.162	.240	.320
JIRR-32 304	240	240	240	240	240	240	240	240	240	240	240	240	240	240	240	240	.094	.137	.161
* JIRR-32 204	240	240	240	240	240	240	240	240	240	240	240	240	240	240	240	240	.162	.240	.320
* JIRR-32 004	240	240	240	240	240	240	240	240	240	240	240	240	240	240	240	240	.162	.240	.320
JIRR-32 303	120	120	120	120	120	120	120	120	120	120	120	120	120	120	120	120	.094	.137	.161
* JIRR-32 203	120	120	120	120	120	120	120	120	120	120	120	120	120	120	120	120	.162	.240	.320
* JIRR-32 002	120	120	120	120	120	120	120	120	120	120	120	120	120	120	120	120	.162	.240	.320
* JIRR-32 001	82	135	125	200	24	67	16	15 1/2	14	14	14	14	14	14	14	14	.094	.137	.161
	125	125	125	125	24	67	16	15 1/2	14	14	14	14	14	14	14	14	.162	.240	.320
	18	24	24	24	24	67	16	15 1/2	14	14	14	14	14	14	14	14	.162	.240	.320
	72	72	72	72	67	67	16	15 1/2	14	14	14	14	14	14	14	14	.162	.240	.320
	13	16	16	16	15 1/2	12 1/2	23	30	30	30	30	30	30	30	30	30	.162	.240	.320
	15 1/2	13 1/2	12 1/2	12 1/2	14	14	14	14	14	14	14	14	14	14	14	14	.162	.240	.320
	19	15	14	14	14	14	14	14	14	14	14	14	14	14	14	14	.162	.240	.320
	15	16	14	13 1/2	16	16	16	16	16	16	16	16	16	16	16	16	.162	.240	.320
	62	58	51	67 1/2	70	70	70	70	70	70	70	70	70	70	70	70	.162	.240	.320
	—	—	—	—	—	—	—	—	—	—	—	—	—	—	—	—	.162	.240	.320
	8 1/2	9 1/2	10 3/8	12	12	12	12	12	12	12	12	12	12	12	12	12	.162	.240	.320
	12	15 1/4	15 1/4	22	22	22	22	22	22	22	22	22	22	22	22	22	.162	.240	.320
	1	1 1/2	1 1/2	2	2	2	2	2	2	2	2	2	2	2	2	2	.162	.240	.320
	3	4	3	3	3	3	3	3	3	3	3	3	3	3	3	3	.162	.240	.320
	3/4	1	1	1	1	1	1	1	1	1	1	1	1	1	1	1	.162	.240	.320
	—	—	—	—	—	—	—	—	—	—	—	—	—	—	—	—	.162	.240	.320
Shell Gauge	.094	.115	.185	.250	.143	.228	.312	.228	.312	.228	.312	.228	.312	.228	.312	.228	.094	.137	.161
Head Gauge	.094	.137	.161	.221	.171	.201	.276	.201	.276	.201	.276	.201	.276	.201	.276	.201	.094	.137	.161
Weight	162	240	320	445	425	575	815	642	875	1005	1200	1580	1930	1985	2100	2230	2775	2850	3715

\*Sizes normally in stock for prompt shipment.

# Custom Fabrication and In-Stock Production of Tanks and Vessels • the most advanced fabrication techniques with exceptional engineering capabilities



Especially in the custom field, fabrication problems created by unique designing for new pioneering applications are the rule rather than the exception at Wood Industrial. Sizes to 12-foot diameters, weights are frequently to 15 tons, thicknesses of materials to  $1\frac{3}{16}$  inches, weld lengths to 30 feet, galvanizing available to 60-inch diameter x 240-inch length and a full range of linings. There is almost no limitation on complexities in design.

Quality control capabilities, often considered first in the industry, have made Wood Industrial a trustworthy source for custom customers year in and year out. Test procedures conducted to satisfy rigid specifications of the American Society of Mechanical Engineers (ASME), and the U.S. Coast Guard.

Typical applications: condensers, columns, pressure vessels, air storage tanks, water tanks, processing equipment, storage units, hoppers, etc.

- Tanks for Solar Heating Systems
- Tanks for Industrial Processing Equipment
- Tanks for Air Storage Air-Operated Equipment
- Tanks for Air-Conditioning, Heating and Cooling
- Tanks for Marine Applications Oil, Fuel, Water
- Tanks for Household Water Storage and Heating
- Tanks for the Well Water Industry
- Tanks for Chemical and Petroleum Industries
- Tanks for Water-Conditioning and Filtration Industries

---

## Wood Industrial Products Company

CONSHOHOCKEN, PENNSYLVANIA 19428