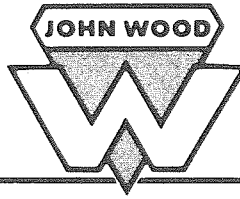


Wood Industrial Products Co.

Conshohocken, Pa. 19428 • Phone 215-828-0800

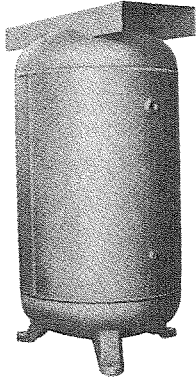
ALCO INDUSTRIES Company



ASME AIR RECEIVERS

Vertical

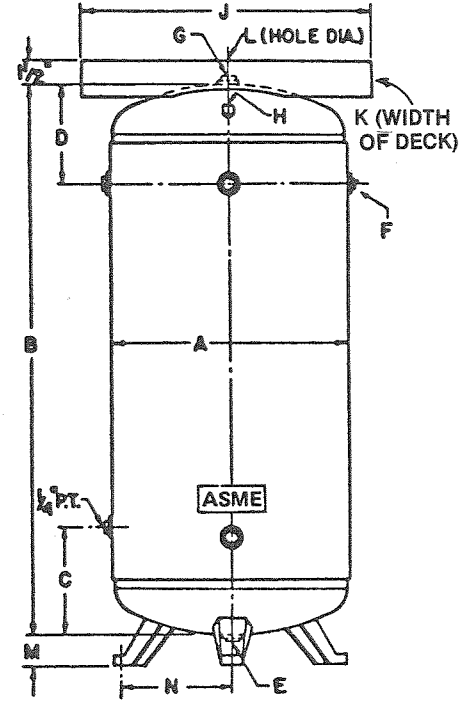
Form #602



Constructed to ASME and National Board specifications under the supervision of a licensed full time resident inspector. Material specifications and thicknesses permit installation in all states.

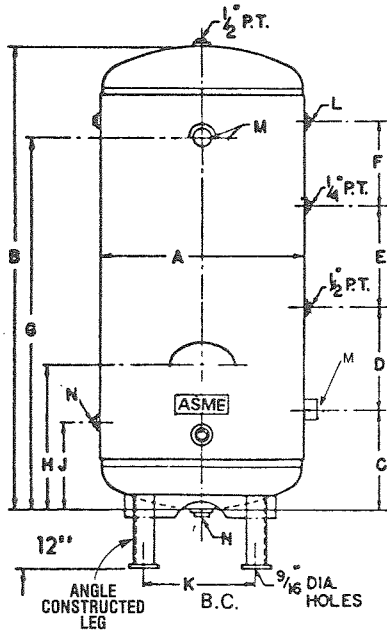
DIMENSIONS AND SPECIFICATIONS	PART NUMBER			
	JVRR-32-210	JVRR-32-211	JVRR-32-212	JVRR-32-213
Gallons	30	60	80	120
Working Pressure	200#	200#	200#	200#
A	16	20	24	30
B	38	48	46	44
C	10 1/4	11	13 1/8	11 1/2
D	9 1/4	10	12 1/8	11 1/2
E	3/8	3/8	1/2	3/8
F	1/2	3/4	1	1 1/4
G	3/4	1	1	1 1/2
H	1/4	1/4	1/4	1/4
J	22	30	30	34
K	9	13	13	14
L	3	3	3	3
M	2	1 1/16	1 1/2	1 1/16
N	9 1/2	12 1/8	13 3/8	14 3/16
Shell Gauge	.124	.154	.185	.228
Head Gauge	.107	.134	.161	.201
Weight, lbs.	90	180	270	360

ALL SIZES NORMALLY IN STOCK FOR PROMPT SHIPMENT



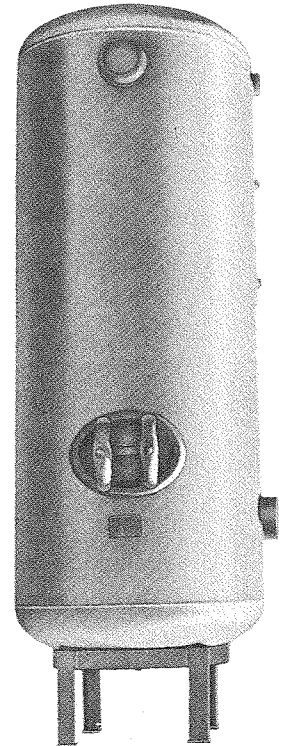
***ADDITIONAL SIZES AND WORKING PRESSURES AVAILABLE UPON REQUEST**

ASME INDUSTRIAL TYPE AIR RECEIVERS



Part Number	JIRR-32-001	JIRR-32-002	JIRR-32-203	JIRR-32-004	JIRR-32-204	JIRR-41-005	JIRR-41-205	JIRR-41-006	JIRR-41-007
Gallons	82	135	120	240	240	400	400	700	1080
Working Pressure	125	125	200	125	200	125	200	125	125
A	18	24	24	30	30	36	36	42	48
B	72	72	67	84	84	93 1/2	93 1/2	116 7/8	143 1/2
C	13	16	16	18	18	21	21	24 7/16	30 3/4
D	15 1/2	13 1/2	12 1/2	23	23	30	30	42	51
E	19	15	14	14	14	14	14	18	24
F	15	16	15	13 1/2	16	15	13	19	21
G	62	58	55	67 1/2	70	76	76	100 1/16	123 3/4
H	—	—	—	—	—	—	—	34 7/16	35 3/4
J	8 1/2	9 1/2	9 1/2	12	12	12 3/4	12 3/4	16 7/16	18 3/4
K	12	15 1/4	15 1/4	22	22	24	24	30	36
L	1	1 1/2	1 1/2	2	2	2 1/2	2 1/2	3	3
M	3	4	3	3	3	4	3	6	6
N	3/4	1	1	1	1	1	1	1	1
Shell Gauge	.094	.115	.185	.143	.228	.171	.273	.200	.263
Head Gauge	.094	.137	.161	.171	.201	.161	.241	.221	.254
Weight	162	240	320	425	575	642	1005	1200	1985

All sizes normally in stock for prompt shipment.



Available in horizontal configuration with saddles.

Manhole on 700 and 1080 only.

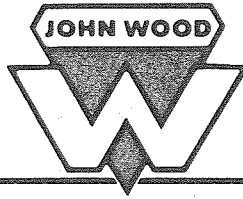
ALL SPECIFICATIONS FOR ALL TANKS SUBJECT TO CHANGE WITHOUT FORMAL NOTICE
For pricing refer to Form #712

11/15/83

Wood Industrial Products Co.

Conshohocken, Pa. 19428 • Phone 215-828-0800

ALCO INDUSTRIES Company



ASME AIR RECEIVERS

Horizontal

Form #602

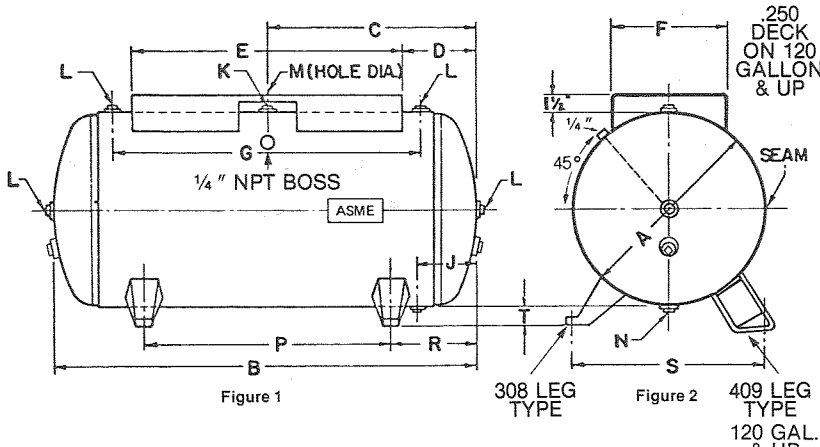
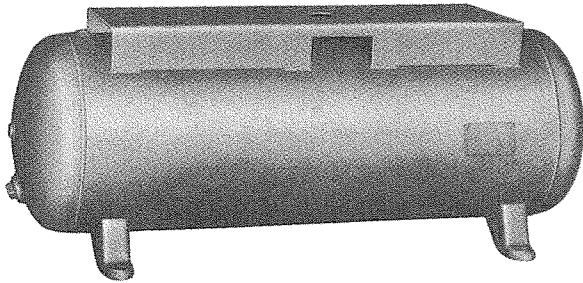


Figure 1

308 LEG TYPE

Figure 2

409 LEG TYPE
120 GAL. & UP

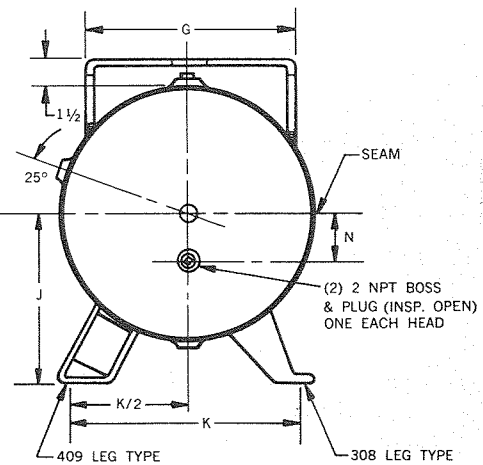
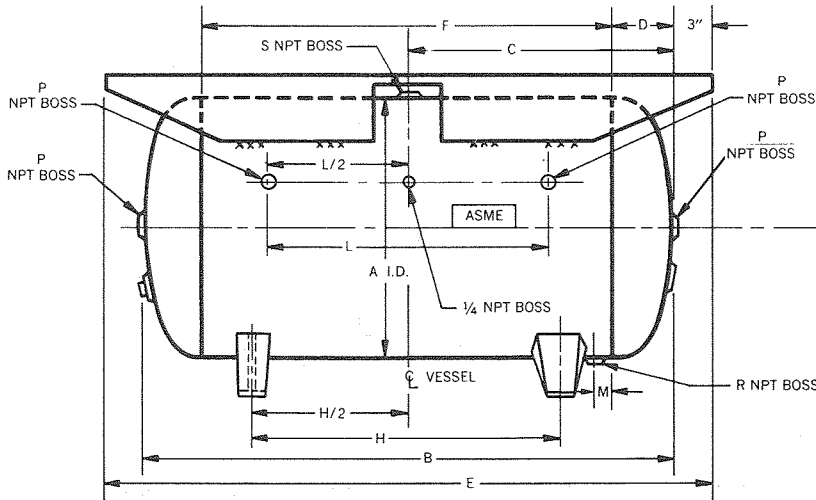


Dims And Spec.	PART NUMBER						
	JHRR-32 001	JHRR-32 202	JHRR-32 203	JHRR-32 204	JHRR-32 205	JHRR-32 206	JHRR-32 207
Gallons	20	30	60	80	120	200	240
W.P.	165#	200#	200#	200#	200#	200#	200#
A	14	16	20	20	24	30	30
B	36	38	48	62½	67	72	84
C	18	19	24	29	31	33½	39½
D	8	7½	9	9	11	13½	19½
E	20	23	30	44	45	45	45
F	9	12	14	14	16	16	16
G	24¼	25½	33¾	47¾	48¼	48½	57
J	6¼	7¼	8	8	9¾	11¾	11½
K	¾	¾	1	1	1½	2	2
L	½	½	¾	¾	1¼	1½	1½
M	2⅞	3	3	3	3	3	3
N	⅞	⅞	⅞	⅞	¾	¾	¾
P	22	22	30	43½	33½	33½	39
R	9	8	9	9½	16¾	19¼	22½
S	13⅞	14⅞	19½	19½	22¼	27¼	27¼
T	1⅞	1½	2⅞	2⅞	1¾	2	2
Shell Gauge	.097	.124	.156	.156	.185	.228	.228
Head Gauge	.094	.107	.134	.134	.161	.201	.201
Weight	71 lbs.	97 lbs.	186 lbs.	243 lbs.	418 lbs.	590 lbs.	674 lbs.

*All sizes normally in stock for prompt shipment.

***ADDITIONAL SIZES AND WORKING PRESSURES AVAILABLE UPON REQUEST**

ASME AIR RECEIVERS Horizontal with Extended Deck



Part No.	Gals	Lbs. WP	A	B	C	D	E	F	G	H	J	K	L	M	N	P	R	S	Leg Type	Shell Gauge	Head Gauge	Wt. in Lbs.
JXRR-32-223	60	200	20	48	24	6	54	36	16	30	12½	19½	28	2	7	¾	¾	1	308	.154	.134	218
JXRR-32-224	80	200	20	62½	29	6	68½	50½	16	43½	12½	19½	43¼	2	7	¾	¾	1	308	.154	.134	284
JXRR-32-225	120	200	24	67	31	7½	73	52¼	18	33½	13⅞	22¼	44¾	2¼	8	1¼	¾	1½	409	.185	.161	415

*All sizes normally in stock for prompt shipment.

Construction to ASME and National Board specifications under the supervision of a licensed full time resident inspector. Material specifications and thicknesses permit installation in all states.

Design pressure 200 PSIG, Test pressure 300 PSIG; Design temperature—20° to 650 °F. Type I, 2:1 elliptical heads. All seams submerged arc welded.

Painted red oxide exterior.

ALL SPECIFICATIONS FOR ALL TANKS SUBJECT TO CHANGE WITHOUT FORMAL NOTICE

For pricing refer to Form #712

11/15/83