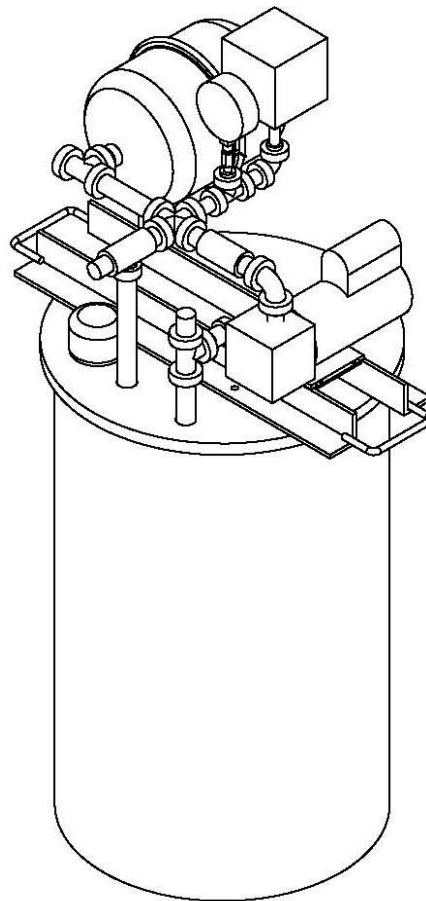


Installation, Operation, and Maintenance Manual
Economy Glycol Feed System
JWEP-53-030/055/100

Rev 1.
3/18/11
K.G.



Type - John Wood #JWEP-030/055/100, Economy Glycol Feed System

Capacity – 30/55/100 Gallons

Service – Glycol/Water Feed

Design Pressure - 100 PSIG

Design Temperature - 180°F

Theory of Operation

The Economy Glycol Feed System keeps the heating / cooling system at or above its minimum operating pressure by the use of the simple logic of the pressure switch. The pump will continue to supply the glycol mixture to heating / cooling system until the glycol feed system's pressure switch is satisfied (maximum system operating pressure).

The glycol feed system is equipped with one low level switch. The low level switch will stop the pumps from running if the level of glycol/water drops below 10%. The pump will resume running when the level of glycol/water rises above 10%.

The glycol feed system has one 1/3 hp regenerative turbine type pump with a head capacity of 125 ft. head (3.2 GPM capacity @ 54.1 PSI).

Installation

Fluid Connection – The Economy Glycol Feed System is equipped with a single 1/2" female NPT threaded outlet connection.

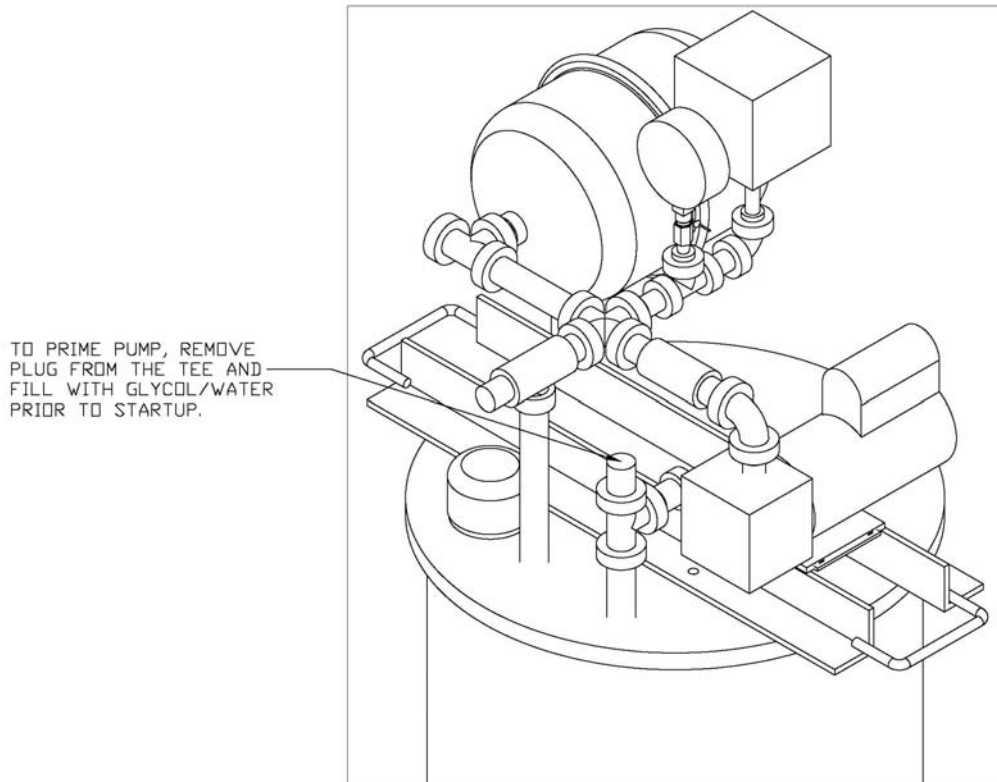
Plumbing – The piping connected to the Glycol Feed System must be supported to minimize mechanical and thermal force on the vessel nozzles. Make every effort to keep the lines as short as possible between the piping support and the Glycol Feed System connection. Be sure all joints are tight. Flush out all lines prior to installation.

Alignment – Proper alignment is key to preventing leakage at the connections and to alleviate undue stress on the system.

Electrical – 120 Volt, single phase, 60 hertz power is required to operate the glycol feed system (refer to schematic for interconnection points). It is the responsibility of the owner / installer to ensure all local and governmental regulations are met.

Operation

Pre-Startup – Recheck installation as described above. Fill glycol / water storage tank with the glycol / water mixture. Verify the pump rotation by jogging the motor, correct if necessary. Before initial startup, make sure the pumps are adequately primed. Make sure that any discharge valves are open.



Start-up –Start unit and check for proper operation. If necessary, adjust the pressure switch using the set point adjustment knob and the dead band adjustment knob. The pressure switch is factory set to activate when pressure falls below 40 psig and deactivate when pressure rises above 60 psig. If your system pressure is less than 40 psig, see P+ID for typical pressure regulator configuration. Check for leakage once the system is in operation.

Maintenance

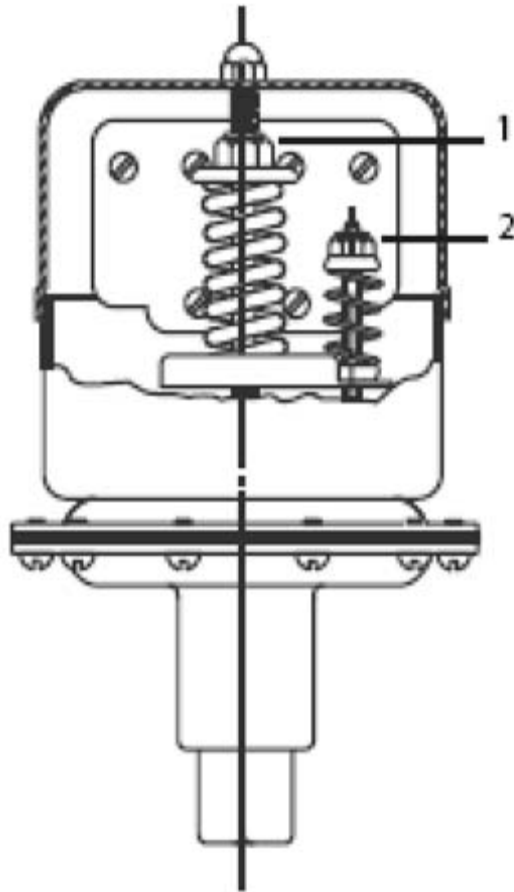
Frequency – The frequency and extent of system maintenance is best established based upon past performance. Keeping detailed maintenance records of past performance aids in determining future preventative maintenance intervals. During routine operating inspections, pay attention to seal and bearing areas of the pump.

Inspection – If unit exhibits reduced flow, an inability to maintain pressure, is noisy or performs otherwise abnormally, first refer to the Troubleshooting Matrix below. If the problem persists, the pump should be inspected for wear or damage. Field inspect by removing the cover nuts (or cap screws) to pull the cover. Apply gasket sealant to the pump cover before reattaching to the pump. Replace pump if worn or damaged.

Trouble Shooting Matrix

Difficulty	Probable Cause	Remedy
No liquid delivery	<ol style="list-style-type: none"> 1. Closed valves 2. Plugged suction strainer 3. Air leak at suction 	<ol style="list-style-type: none"> 1. Open valve 2. Eliminate restriction 3. Locate and repair leak
Low liquid delivery	<ol style="list-style-type: none"> 1. Discharge pressure too high 2. Air leak at suction 3. Worn or damaged pump 4. Low viscosity 	<ol style="list-style-type: none"> 1. Reduce downstream pressure 2. Locate and repair leak 3. Inspect and repair as required 4. Verify original application
Gradually loses prime	<ol style="list-style-type: none"> 1. Air leak at suction 2. Worn or damaged pump 	<ol style="list-style-type: none"> 1. Locate and repair leak 2. Inspect and repair as required
Noisy	<ol style="list-style-type: none"> 1. Cavitating 2. Worn or damaged pump 	<ol style="list-style-type: none"> 1. Eliminate restriction 2. Inspect and repair as required
Motor runs hot or overloads	<ol style="list-style-type: none"> 1. Discharge pressure too high 2. High viscosity 3. Incorrectly wired motor 4. Binding internal pump parts 	<ol style="list-style-type: none"> 1. Reduce down stream pressure 2. Verify original application 3. Check wiring 4. Inspect and repair as required
Seal leaks	<ol style="list-style-type: none"> 1. Dry running 2. Seal material incompatible with fluid 	<ol style="list-style-type: none"> 1. Open valve, prime pump 2. Verify original application

Setting the Pressure Switch

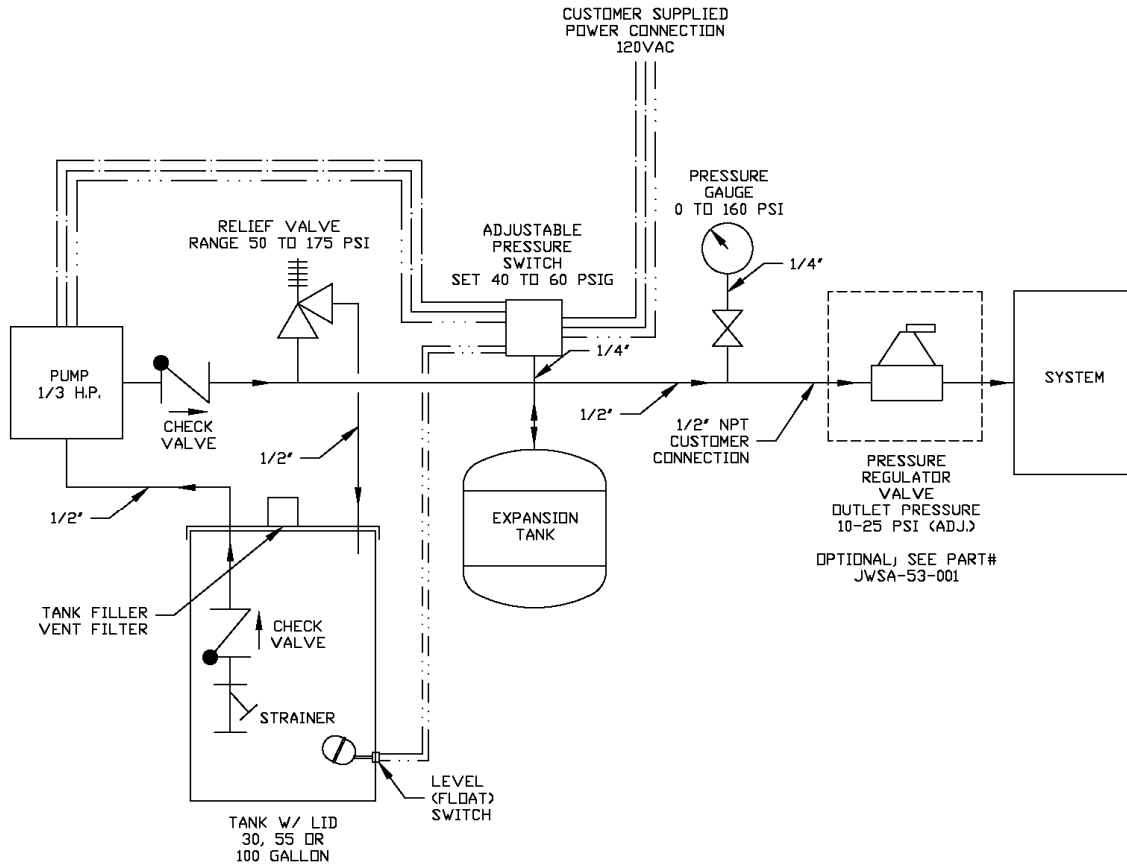


1. When setting the pressure switch, adjust the switching point on falling pressure (cut-in) first and then adjust the point on rising pressure (cutout).
2. Switching point on falling pressure: set the cut-in pressure by adjusting screw-nut 1. Tighten to raise the set point. Loosen to lower the set point.
3. Switching point on rising pressure: set the cut-out pressure by adjusting screw-nut 2.
4. Tighten screw-nut 2 to increase the differential in pressure. This will also increase the cut-out set point. Loosen screw-nut 2 to decrease the differential in pressure.

Economy Glycol Feed System P&ID

NOTES:

1. ALL PIPE 1/2" SCH 40 UNLESS NOTED OTHERWISE.



ALL UNITS ARE INCHES.

SCALE: NONE

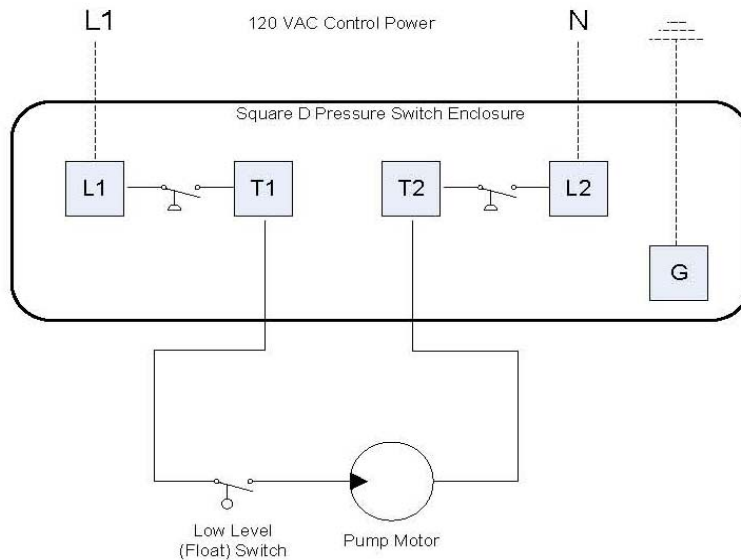
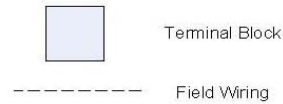
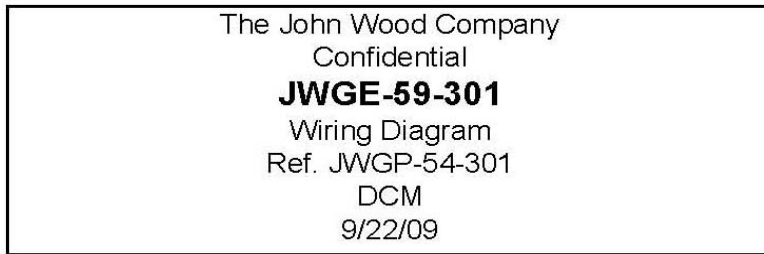
THESE DRAWINGS, SPECIFICATIONS, AND THE IDEAS CONTAINED HEREIN ARE THE EXCLUSIVE PROPERTY OF THE JOHN WOOD CO. THESE DOCUMENT/S SHALL NOT BE COPIED OR REPRODUCED IN PART OR IN FULL AS A BASIS OF DESIGN, MANUFACTURE, OR SALE, AND SHALL NOT BE USED IN ANY WAY DETRIMENTAL TO THE INTEREST OF THIS COMPANY. THEY ARE SUBJECT TO RETURN UPON REQUEST.

ECONOMY GLYCOL SYSTEM P&ID

JWEP-53-030/055/100

SIZE	DR. K.G. 3/18/11	REVISION	DATE BY	THE JOHN WOOD COMPANY VALLEY FORGE, PA.	JWEP-53 PID	REV
A	CH. _____ APP. _____					

Economy Glycol Feed System Wiring Diagram



Spare Parts

The following replacement part(s) are available:

- | | |
|--------------------|------------|
| 1. Level Switch | #3BY58 |
| 2. Relief Valve | #100099115 |
| 3. Expansion Tank | #JNER14008 |
| 4. Pressure Switch | #100099121 |
| 5. Pump | #100099115 |
| 6. Pressure Gauge | #060563006 |